

The Montado in Southern Portugal: threats and opportunities for a multifunctional agro-silvo pastoral system facing present transition challenges

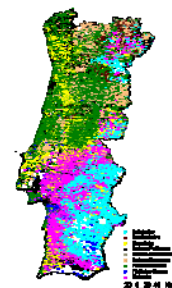
SÓNIA CARVALHO RIBEIRO, SRIBEIRO@UEVORA.PT

TERESA PINTO CORREIA, MTPC@UEVORA.PT

MEDITERRANEAN ECOSYSTEMS AND LANDSCAPES (MEL)
UNIVERSITY OF ÉVORA, PORTUGAL,



Portugal: an introduction



Depopulation trends in rural areas

Wild forest fires- North and Central Portugal

Sustaining living communities in inland rural areas?

The Montado in S. Portugal: threats and opportunities for a multifunctional agro-silvo pastoral system facing present transition challenges

main points in this presentation:

- The montado agro-forestry system: is extensive and adapted to the agro environmental conditions of Southern Europe
- New threats and opportunities in the context of global environmental change, also changing dynamics at the socio-economic level
- New paradigms for management: integrating different functions x acknowledging territorial differentiation

The Montado agro-silvo pastoral system



The Montado: Opportunities



- Economic values - multiple exploitation - cork production, meat, charcoal production, hunting, beekeeping, ...
- Ecological values - adaptation to specific conditions, biodiversity
- "Wilderness" experiences - contact with nature, calm, comfort, refreshing shadow
- Aesthetic value - scenic attractiveness, complexity, trees' morphology, light and shadow contrast
- Tradition and identity

Mediterranean extensive systems

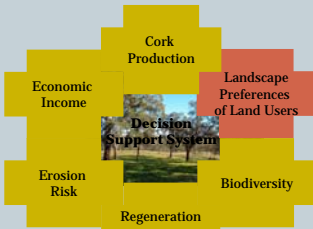


Threats

- Low productivity of agriculture > lack of competitiveness in global markets
- Vulnerability to pressures of change: abandonment, afforestation, urbanization,
- Lack of support and orientation to land owners in face of multifunctionality challenges

Opportunities

- Still diversified and characteristic landscapes
- High environmental quality + cultural values
- Increased demand for amenity functions
- New actors in the rural



HIGHER PREFERENCES FOR MONTADO



Montado 61%



Preferred Montado types for LANDOWNERS



21%

Aligned spatial composition of trees / reduction of management costs
Livestock – contribution for property income



Surova, D., Pinto-Correia, T., 2008. Landscape preferences in the cork oak Montado region of Alentejo, southern Portugal: Searching for valuable landscape characteristics for different user groups, *Landscape Research* 33(3):311-330.

Preferred Montado types for TOURISTS and NEW RURAL INHABITANTS

- Irregular trees' distribution, wilderness aspect
- Variety of landscape types
- Recognition of the silvo-pastoral system as original and typical for the region



20%



16%



15%

Surova and Pinto Correia (2008).

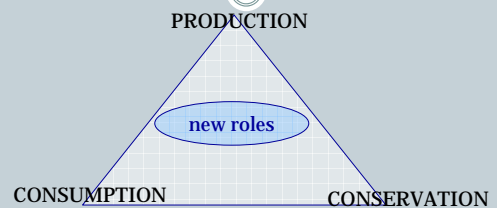
		SOCIAL FUNCTIONS						
		Hunting	Production	Tradition	Recreation	Mushroom picking	Beekeeping	
MONTADO TYPES	open area without livestock	5	1	3	2	0	1	
	dense aligned with livestock	1	5	4	1	0	0	
	dense area with livestock	0	4	5	5	3	0	
	dense aligned with shrubs	4	2	1	1	5	4	
	dense area with shrubs	2	2	1	3	5	4	
	highly dense area with shrubs	3	1	2	4	5	5	

LEGEND: most preferred (red) to non preferred (yellow)

Transition processes ?

"NEW" rural areas, specially in peripheries

Facing new demands from society x global drivers >> from spaces of production into spaces of consumption and conservation



Holmes, J. (2006) Impulses towards a multifunctional transition in rural Australia: Gaps in the research agenda, *Journal of Rural Studies*, 22, pp. 142-160.

The problem is...



SO FAR, the amenity functions do not generate income able to overcome the lower agricultural productivity of the system



Challenges for management for research for education

***** MULTIPLE TRANSITIONS
through COMPLEX PROCESSES,
in a range from productivism to post-productivism**

Other functions are becoming more valued than production,

BUT >> are they shaping the landscape ?
>> how are they incorporated in farm systems ?
>> which drivers at the farm level ?
>> which analytical tools ?

Facing the challenge the need for new approaches

- Interdisciplinarity as a consequence of the problem solving perspective
- Hands-on learning as a way to fully grasp the complexity of the issues at stake
- Immersion in local context as a condition for understanding contextual factors
- Internationalization as a source for questioning and inspiration

Thank you!



Sónia Carvalho Ribeiro, sribeiro@uevora.pt
Teresa Pinto Correia, mtpc@uevora.pt

